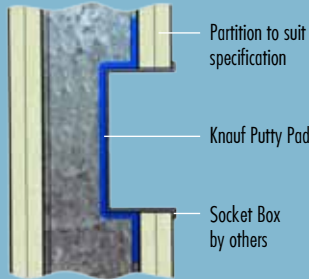


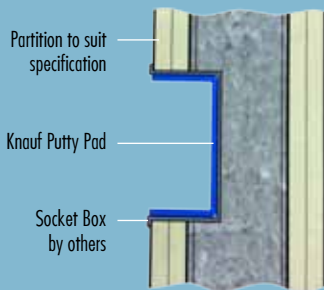


## **KNAUF PUTTY PADS FOR DRYWALL SOCKET BOXES**

Knauf Putty Pads are sheets of intumescent, mouldable putty designed for use inside and outside plastic electrical socket boxes. They offer not only fire protection but also ensure that the acoustic integrity of a drywall system is maintained, without the need to construct baffle boxes that are time-consuming.



Option 1 ( Outside)



Option 2 ( Inside)

### Features

- Quick and easy to install
- Designed to fit most typical drywall socket boxes
- maintain a fire rating of up to 2 hours in drywall applications and an acoustic rating of up to 67dB Rw.

### Use

Suitable for use in all application e.g. residential, commercial, etc.

### Performance

Knauf Putty Pad Performance Information	
Application temperature	0°C – 50°C
Storage temperature	10°C – 30°C
Cure	Non-setting
pH	Neutral
Intumescent activation	Approx. 200°C

## Product Specifications

### Description :

Fire and Acoustic Protection of drywall socket boxes is made simple by using new Knauf Putty Pads.

### Two Sizes of Putty Pads are available:

170mm x 170mm

230mm x 170mm

Both are 3.0 mm thick and come in boxes of 20.

## Knauf Contact

Technical Service :

+65 63459233

www.knauf.com.sg

enquiry@knauf.com.sg

### Disclaimer:

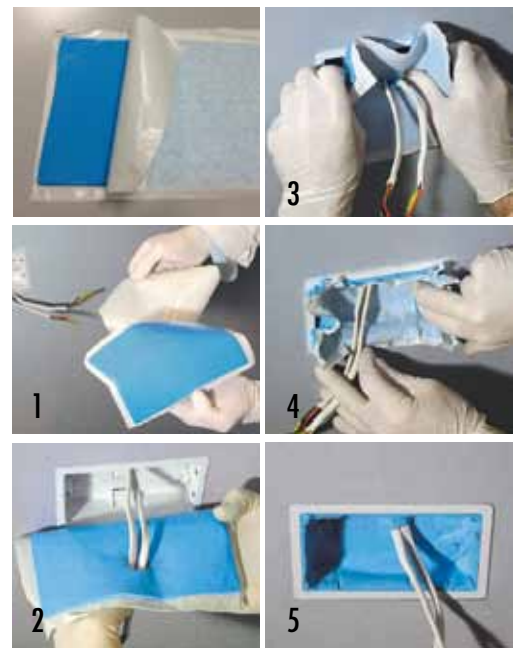
The information provided in this leaflet is only intended to give guidance in selecting and using Knauf products. While we make every effort to ensure its accuracy, neither Knauf Singapore Pte Ltd nor any of its employees or affiliates warrant or assume any legal liability or responsibility for the completeness or usefulness of any information regarding any apparatus, product, or process described in this leaflet or for any failure in installing or constructing any structure, installation or building or part thereof, caused by using this leaflet. Readers are advised to independently verify this information prior to relying on it. In particular, readers must obtain appropriate independent advice on the use of products in specific structures, installations or buildings to ensure compliance with all regulations, including health and safety regulations.

## Installation Guide

### Knauf Putty Pad Installation :

Always wear protective gloves when handling.

1. Remove the paper from one side of the pad
2. Make a slit for the cable and pass the cable through the pad
3. Push the pad fully inside the box
4. Pay special attention to the corners
5. Trim off any excess material



For other dimension and further technical detail, please contact Knauf Singapore Pte Ltd.

### Knauf Singapore Pte Ltd

80 Marine Parade Rd #14 - 06

Parkway Parade

Singapore 449269

Tel. : (+65) 6345 9233

Fax. : (+65) 6345 5465

E-mail : enquiry@knauf.com.sg

Website : www.knauf.com.sg

### PT. Knauf Gypsum Indonesia

Cilandak Commercial Estate

Garden Centre 5<sup>th</sup> Floor, Suite 16 (B)

Jl. Raya Cilandak KKO

Jakarta 12560, Indonesia

Phone: (+62 21) 789 1661

Fax: (+62 21) 789 1662

E-mail : techteam@knauf.co.id

Website : www.knauf.co.id